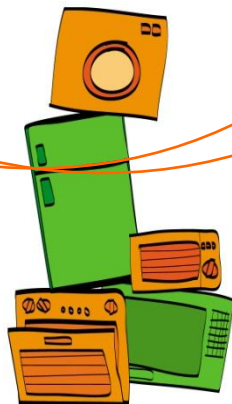
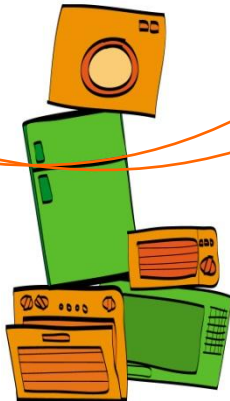


# ENVIE



# The ENVIE network



*Since 25 years, Envie requalifies professionally and socially people who are rejected, by an economical activity consisting in a collect of household electrical appliances which are:*

- *recycled*
- *or renewed and sold for a low price.*

# The ENVIE network : the objectives

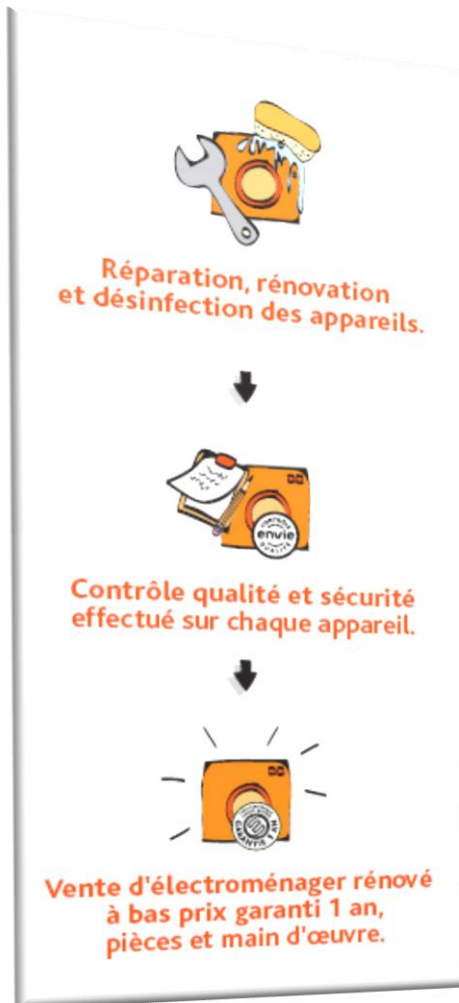
- To encourage **the occupational reintegration** of rejected people and long time jobless people
- Act for **people's right** to have a job, an income, an education
- Be active in **the environnement's protection** by proposing a professional solutions for DEEE's treatment
- To allow **the low income earning menages** to equip themselves with good household electrical appliances under a year guarantee for a low price
- Contributing to the **local economical development** with a strong anchoring in France



Le réseau  
**envie**  
[www.envie.org](http://www.envie.org)

- [illegible]

# ENVIE : Renewed household electrical appliances Guaranteed



- Envie's historical activity
- More than **25 years** of experience
- **25** social companies
- **48** stores
- **65 000** renewed devices sold in 2008
- **Total sales : 20 000 000 €**
- **600** employees, in which **440** by work reintegration

# ENVIE : Environnement & Emploi



**envie**

Notre solution professionnelle  
pour l'homme et l'environnement

- Over **10** years of experience,
- **23** social companies,
- In 2008, **100 000** tonnes of DEEE collected and **15 000** tonnes handled
- Total sales : **31 000 000 €**,
- **750** employees, in which **580** by work reintegration

# ENVIE : Insertion Socioprofessionnelle

- **A job contract** followed by the book with the warranty of an immediate income
- **A practical and theoretical education** acknowledged (AFPA, professional entities, companies)
- **A following** by an experienced team
- **Un social following** built with the social partners (helping in the administrative paperwork)
- **An valued professional experience**
- **The elaboration of a true professional project** helping the reintegration to the working day life

# ENVIE : Social and Professional integration

- **A rejected population since a long time**
  - **81,56 %** live a precarious life,
  - **66,74 %** have applied to the employment research centre « POLE EMPLOI », and only **9,10 %** have not
  - **71,66 %** of the employees have got a degree inferior or equal to level 5(CAP, BEP).
  - **50 %** of the employees have got a precarious professional trajectory
  - **42 %** of the employees working for ENVIE have issues to find an accomodation adapted to their situation.
  - **38 %** don't have a driving licence when they arrive at ENVIE and **46 %** of them don't have a mean of transportation

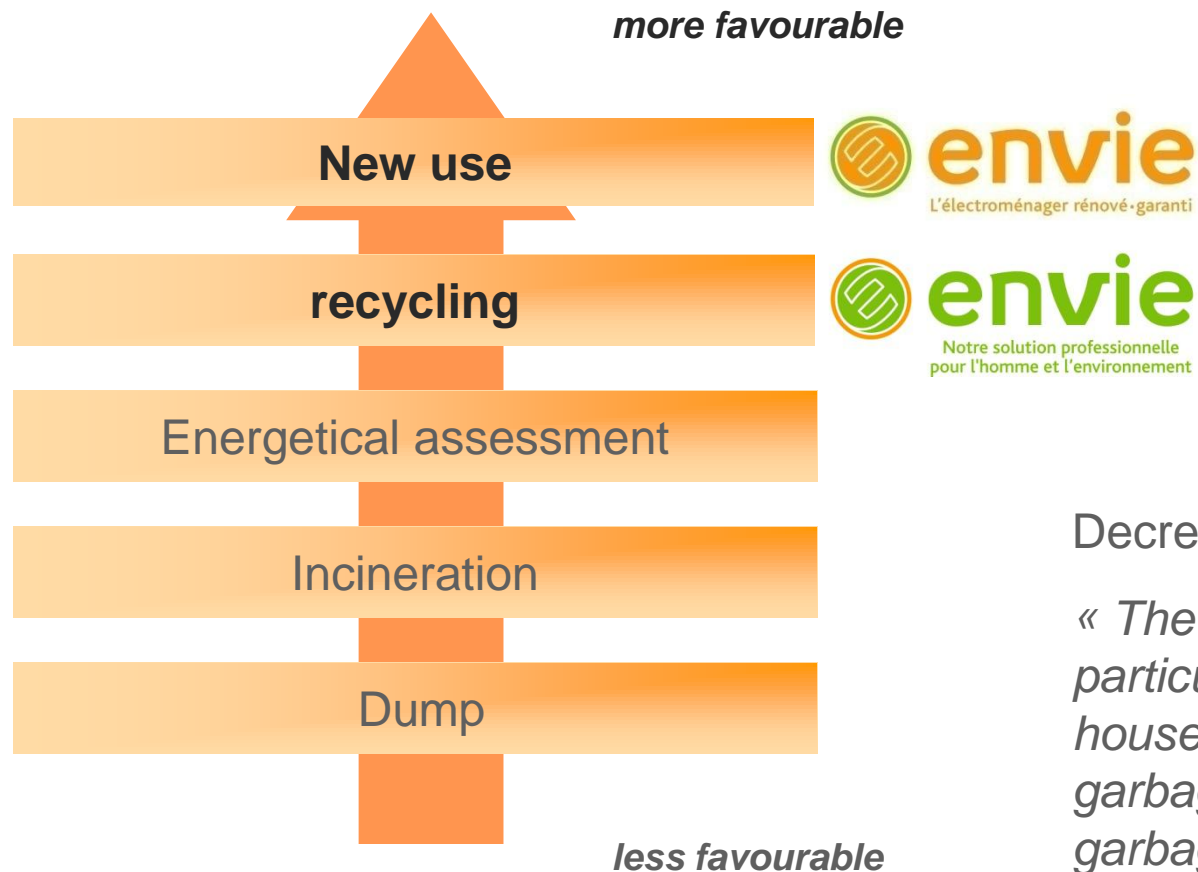


# ENVIE : Social and Professional integration

**1000 government regulated jobs for 1 700 people welcomed / year**

- **2008 results**
  - **51,22 %** have found a job or an appropriate education
  - **85 %** are employable regarding the productivity and quality requirements
  - **20%** of the salaries have obtained an education
  - **78 %** of the peoples who have acknowledged skills find a new job
  - **13 %** have got a driving licence
  - **15 %** have their own accomodation
  - **94 %** have implicated themselves on a professional project

# ENVIE : an environmental branch



Decree DEEE/Art. 22 :

*« The valorization and, particularly, the new use of household appliances garbage and electronical garbage is preferred to their destruction. »*

# ENVIE : an environmental branch

## ■ A global service offer

- Funds collecting for the DEEE made to measure, adapted to the local particularities
- Grouping and sorting of the DEEE with their own kind (GEM cold, GEM no cold, screen et PAM)
- Optimal sorting of devices allow the re-use correspondingly to the European directive
- A national solution for re-using household appliances
- Preparation of the DEEE before industrial treatment(dismantling)
- Global Prestation of DEEE erasing with a partnership with professionals in that domain (Coolrec, Véolia, Sita...)
- A guaranteed traceability (software dedicated to DEEE, erasing lists et BSDD) and a regular report